

# THANK YOU FIRIES DAY

Come along and join us to say  
THANK YOU to our local RFS.

**This Friday 28 February 2020 from 1.30pm**

**BBQ n drinks available**

(Proceeds from sales will be donated to the Moonbi  
Kootingal RFS.)



**Thank you Fireys'**

**Lapel Pins \$4**

**Available at the office**

**Moonbi Public School**



'Thank You Fireys'© Lapel Pin

All profits from each sale go directly back to volunteer fire brigades in the state or territory of purchase.



*Let's make a difference and clean up our environment!*

**Moonbi Public School**

**Friday 28<sup>th</sup> February 2020**

Get involved with clean up Australia Day on Friday 28<sup>th</sup> February by helping clean up our school area.

We will be cleaning during gardening time at 10am.

*If students could please bring their own gloves for this event.*

## An update from the Murphy family



As many know the Murphy family relocated to Tasmania at the end of last year. They send their love to all students and staff and have included these photographs, showing the family visiting Dip Falls and the girls at their first day attending Burnie Primary school. The school has about 350 students, much bigger than our small school. We wish the girls well as they settle into their new school.



### Student requirements

Students are expected to bring these items (clearly labelled) ready to start now. Lists are available on Facebook and School Stream or available via the office.

**Families that have been having issues sourcing the Homework Contracts workbook may order through our front office.** These books are available for \$18.95.

### VOLUNTEERS – Parents at school

Please remember to always sign in and out at the office when helping at school. Parents and guests at our Awards Assemblies and school functions are also reminded to please sign in in the visitor's book instead.

**Please return completed General Permissions now.**

## ARRIVAL AND DEPARTURE FROM SCHOOL

No child may leave the school grounds during school time unless collected by a parent/guardian. Should you need to collect your child during school hours please call at the office, where you will need to sign the 'Early Leavers' book whilst a staff member will collect your child from the classroom. If you are in a hurry please phone ahead and staff will have students and form ready for you.

## CHILDREN'S CROSSINGS

Three key things to know about how Children's Crossings operate:

### "CHILDREN CROSSING" FLAGS

Children's Crossings operate when the orange 'CHILDREN CROSSING' flags are displayed which is usually during normal school zone times 8:30am - 9:30am and 2:30pm - 3:30pm.



**Drivers** - approaching a Children's Crossing with orange flags displayed

By law, drivers must stop their vehicle at the stop line and wait until all pedestrians (children and adults) on the crossing, and those about to step onto the crossing, have safely crossed the road.

Drivers who fail to stop at a Children's Crossing risk four demerit points and a \$561 fine, not to mention the risk of hitting those using the crossing.

**Pedestrians**- using a Children's Crossing

Must walk between the two red and white posts on each side of the road and keep within the line marked area.

### 'Stop, Look, Listen and Think'

Whatever traffic facility children use, students still need to 'Stop, Look, Listen and Think' when they are planning to cross a road. Pedestrians should not automatically rely upon drivers seeing them. It is necessary for young children to be supervised by a responsible parent or carer and have their hand held when walking to and from school. No matter how well they are taught children may respond unpredictably in traffic.

## COMMUNICATION - VITAL TO THE PARTNERSHIP BETWEEN HOME AND SCHOOL

**Addressing Concerns:** Sometimes young students may not tell us about something that is worrying them, but will discuss it with you at home. Therefore, it is most important that you contact the school if your child is upset or uncertain in any way. We are more than happy to meet with you to discuss any concerns. We need time to organise appropriate staff and place for meetings to occur so please contact the office to arrange a meeting time. Small schools are very busy places as teachers have to do share the same amount of jobs as big school between far fewer staff members so in order to help us to prioritise daily activities and meetings please let the office know if the meeting is

- 1) urgent
- 2) serious but non-urgent
- 3) at earliest convenience.

Beyond this, a conversation with our school counsellor or Principal is also welcome. We strive to ensure your child is happy, safe, learning and enjoying the whole experience of school.

All teachers can be contacted through our school email address. Parents who wish to contact teachers can send their first email to the school email address marking it to the attention of the teacher concerned: moonbi-p.school@det.nsw.edu.au and this will be forwarded to the teacher.



# PSSA Zone Football Trials (boys and girls)

Trial date; Friday 6 March 1-3pm

Venue Gipps Street Football Fields, Gipps Street, Tamworth.

REQUIREMENTS: (water, shin pads, soccer boots, suitable clothing for football)

COST: \$ 5.00 to be paid to convenor.

## **Nominations due at school by Monday 2 March 2020.**

Players MUST BE competent and competitive football players. We are able to nominate 4 students. If we receive a larger number of nominations, Mrs Broughton will contact you further.

Please note that players that qualify will be required for;

Southern Trials Monday 16th March

Regional Trials Monday 23rd March



**Reasons to  
enrol your son  
at Farrer**

**A broad  
curriculum  
offering academic,  
practical and  
creative learning  
opportunities,  
taught by a  
cohesive,  
collaborative team**

**Established in 1939  
we have a tradition of  
pride in our school  
with core values of  
respect, excellence  
and fairness**

**Vision Statement**  
"Proudly committed to  
producing thinking,  
well-educated, skilled,  
flexible and caring  
people capable of  
confident effective  
participation in society."



**This is your opportunity to tour our campus  
and see what Farrer can offer your son**

**OPEN DAY 2020**

**WEDNESDAY 18<sup>TH</sup> MARCH  
8.30 – 2.00PM**

We are the only boys' agricultural Government selective school in Australia. Farrer has established an enviable reputation as a centre of excellence in academics, agriculture, welfare and sports programs. Catering to the education of both day and boarding students Farrer is set on 191 hectares of prime agricultural land, 10 kilometres from Tamworth, New South Wales.

Register online at **Farrer**

by Monday 16th March 2020

6764-8607 – Kerry Hussey – Enrolments Officer

Wear casual clothing & bring a hat.

Refreshments and a light lunch will be served.



**Farrer Memorial Agricultural High School**  
**585 Calala Lane, Tamworth NSW 2340**  
**6764 8600** [www.farrer.nsw.edu.au](http://www.farrer.nsw.edu.au)

## Up & Coming Events

**Thursday 27 February** – student banking

**Friday 28 February** – Firey's Thank You Day  
**everyone is welcome**

**Monday 2 March** – Mrs Broughton and Mrs Weis attending Learning Sprints Conference

**Thursday 5 March** – student banking

**Friday 6 March** – Canberra deposits due

**Thursday 12 March** – student banking

**Thursday 19 March** – student banking

P&C AGM 6pm

**Monday 23 March 2.30pm** Awards Assembly

**\*\* claim the date – Tuesday 28 April** School ANZAC Service

**Thursday 9 April** – Bunny Bazaar

Last day of Term 1

**Tuesday 28 April** – Students return for Term 2

## P&C News

### Clothing Pool:



The P&C run a volunteer Clothing Pool for families to purchase new and quality second hand uniforms, unfortunately our current supervisor has had to relinquish this position due to ill health.

If you have placed an order or are awaiting a receipt please contact either our

President: Mrs Cheryl Johnson

on 67 603 870 or email the secretary at:

[moonbipublicschool@pandcaffiliate.org.au](mailto:moonbipublicschool@pandcaffiliate.org.au)

For all new or pre-loved enquires please also contact us, for at the moment clothing pool will be ran on a pre-appointment basis only. We check the emails daily and will get back to you asap. We ask that you appreciate how busy our school office is and direct all enquires to the P&C, if an emergency situation occurs please call Kim Kelly on: 0429 334 607 from 7am.

## HELP OUR SCHOOL WIN A COMMUNITY GARDEN!

Our school is competing in the  
**Colgate Community Garden Challenge!**

The schools that collect the most  
oral care waste and online votes can  
win a recycled community garden set!

Vote for us online and track our  
school's ranking at :

**[Terracycle.com.au/colgategardenvoting](http://Terracycle.com.au/colgategardenvoting)**



**We collect any brand of used:**



To find out more about the Colgate Community Garden Challenge and for full terms and conditions, visit [www.terracycle.com.au/colgategarden](http://www.terracycle.com.au/colgategarden). If you have any further questions, call TerraCycle on 1800 983 324

Authorized under NSW Permit No LTP5/18/30896, SA No T18/23 01 and ACT Permit No TP18/02559







## 4/5/6 Writing

# VOLCANOES

Students recently completed an informative unit where they had to research and write a report about volcanoes. Check out some of their great writing and interesting facts!



## The Amazing Volcanoes!

Volcanoes are magnificent mountains with a large hole on top, filled with steaming hot liquid called lava! These fabulous volcanoes can spurt lava from the large hole on top at any time! These volcanoes can be very dangerous and cause death! What do you know about volcanoes?

Some mountains and rocks are formed by volcanoes, some big rocks in weird places we're made by lava years ago, the lava hardens and becomes something called igneous rock!

The most usual way to split lava flows into individual types is: Pahoehoe lava flow, AA lava flow, blocky lava flow and pillow lava!

### Pahoehoe lava

Pahoehoe lava is a common type of basaltic (basaltic is igneous rock) lava that cools down creating typical smooth, billowy or ropy surfaces. Often, it forms by many small breakouts of an over-crusting inflating flat, irregular flow.

### AA lava

AA lava is called AA lava because it is a Hawaiian word meaning "stony with rough lava"! It is pronounced "ah ah".

AA lava is thick, slow and starts during an eruption!

### Blocky Lava

Blocky Lava is molten rock covered in carapace or crystalline (hard shells or coverage), angular blocks which tend to be smoothly faceted and may have dimensions up to several metres.

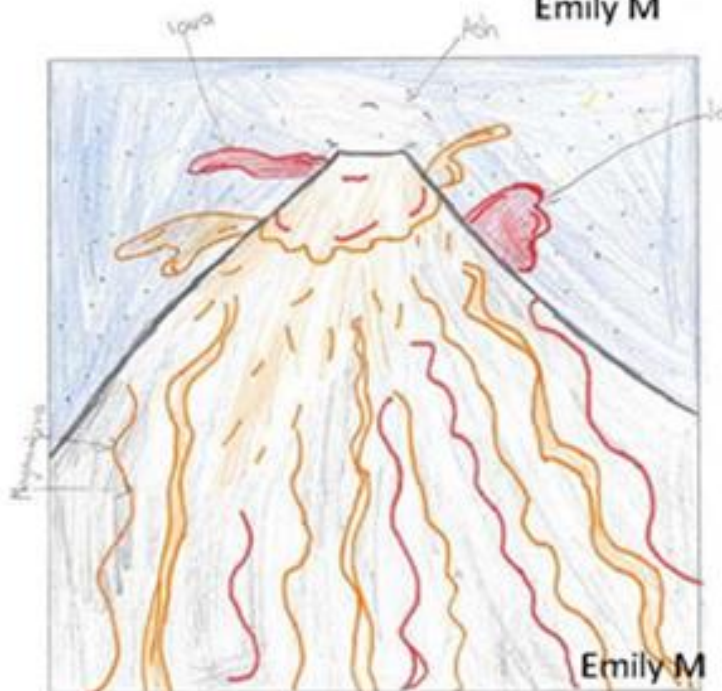
### Pillow Lava

Pillow lava is lava that looks like pillows, splats, blobs or a runny substance! Pillow lava is usually found underwater however can be found above water!

Volcanoes erupt when molten rock/magma rises to the surface. Magma is formed when the Earth's mantle melts... Runny magma erupts through openings or vents in the Earth's crust before flowing onto its surface as lava.

These amazing volcanoes are dangerous but beautiful! But I have a question for you! Would you live near a volcano? A volcano that could erupt at any time! These unreliable volcanoes are astonishing but dangerous!

Emily M



Emily M

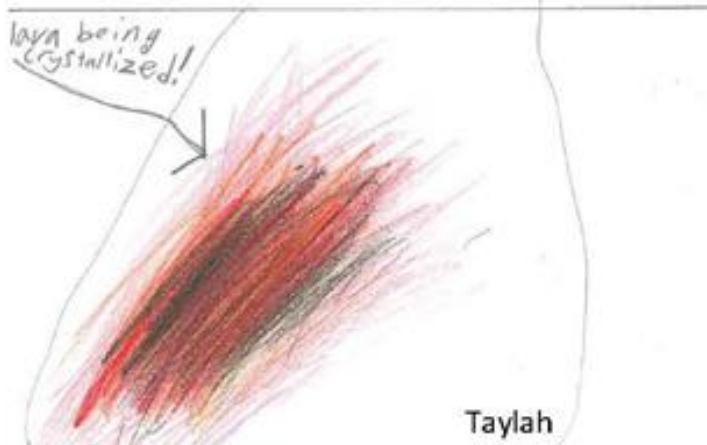
Volcanoes are mountain like rocks. Some people like to go to volcanoes after they erupt to find diamonds! But don't go to find diamonds when the volcano is erupting!

There are three main types of volcanoes the first type of volcano is the composite (strato) volcano. The composite volcano are steep-sided cones formed layer of ash and lava flow.

A dormant volcano is an active volcano that is not erupting. Even dormant volcanoes are becoming active. Extinct volcanoes can come back to life. An extinct volcano is dead when it has not erupted in the last 10,000 years.

Lava is made up of crystals, volcanic gas and bubbles.as magma gets closer to the surface and cools, it begins to crystallize minerals like olivine and forms bubbles. When the lava comes out of the volcano it is made up of a slush of crystals, liquid and bubbles.

Volcanoes can be very dangerous but very fascinating to watch for a safe distance.



## Volcanoes

Volcanoes are a type of mountain that usually spray lava. It is a really hot liquid that could melt you in seconds.

There are three different types of lavas, pillow lava, Aa lava and pahoehoe. Pillow lava has that name because of its pillow rock shapes, Pillow lava is usually found under water in the sea and is one of the most common lavas. The pahoehoe lava is runny and fast it spreads very easily. Aa lava moves slowly and most rocks are made from it.

The crust is the outer layer of the earth and it is 18 miles thick. It is the part we live on. The second layer is called the mantle it is about 1,800 miles thick. The inner layer is called the core it is the hottest out of them all.

Volcanoes are super deadly so keep away from them ☹️



## Volcanoes

A volcano is a hill or mountain that spays lava, gas and ash from the earth's core. did you know that volcanoes are named after the roman god Vulcan? Not all volcanoes are active but there are still dangerous and active to this day. a volcano erupted recently in Newzeland forty-seven people died.

### Different types of volcanoes

Did you know there is five different types of volcanoes? vulcanian, strombolian, Hawaiian, plinia and pellean.

**Vulcanian-** Fierce and powerful explosion launch out a very thick lava and lava bombs.

**Strombolian-** A steamy and muggy little lava bombs, blocks, ash, gash and glowing cinders.

**Hawaiian-** A large amount of runny lava erupts from large type of volcanoes.

**Plinia-** The plinia volcano eruption is when cinders, gas and ash explode itself so high into the air.

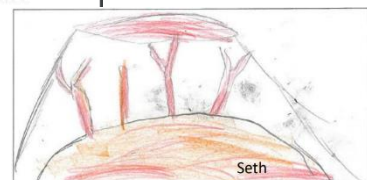
**Peleeen-** blocks of thick and sticky lava then a burning cloud of ash and gas come swooping in right after the thick and sticky and stick lava blocks.

### Super volcano

Did you know there is a super volcano? A super volcano is a massive volcano that is a lot more powerful than a regular volcano when it is active or erupts. A super volcano is located in wah wah springs USA. If a super volcano erupted the ash and volcanic rocks would spread 1000.63 km and could cause an avalanche of gas, ash and hot volcanic rock

### Water volcanoes

Water volcanoes AKA submarine develop from the cracks at the bottom of the sea surface. The magma rises to form pillow lava. Tectonic plates are large eras of the earths crust that float on a layer of very hot melted molten rock and when the tectonic plates rub together or hit each other make a volcanic reaction which makes a volcano erupt.





# Facts about Volcanoes

A Volcano can be a hill or a mountain that can shoot out lava at any time. Volcanoes can erupt in Mexico, New Zealand, and Hawaii. Fun fact, the name volcano comes from the roman fire god - Vulcan.

## Different types of lava

Did you know there are different types of lava? Volcanoes can shoot out ash, hot magma and lava. The names of the lava are pillow lava, Aa lava and pahoehoe. Pillow lava is the lava that comes in lumps. Pahoehoe is the runny type of lava and Aa lava is the very slow lava. Diamonds could be found weeks later after an eruption. Also did you know the lava is red hot magma?

## Where are volcanoes found?

Most volcanoes are found in a place called ring of fire. The ring of fire is located in Hawaii around the Pacific Ocean. The top 8 countries with the most volcanoes are United States which has 173 volcanoes, 2<sup>nd</sup> is Russia which has 166 volcanoes, 3<sup>rd</sup> is Indonesia it has 139 volcanoes, 4<sup>th</sup> is a place called Iceland it has 130 volcanoes, 5<sup>th</sup> is Japan it has 112, 6<sup>th</sup> is Chile it has 104, 7<sup>th</sup> is Ethiopia it has 57 and last but not least Papua New Guinea has 57.

## Facts about Pompeii

Pompeii is an ancient Roman city in Italy. Pompeii is 160 acres long. 20,000 people lived at Pompeii. The city was destroyed by the eruption of Mount Vesuvius. The volcano has erupted thousands of times in the last 2,000 years. But on august 24<sup>th</sup> Mount Vesuvius exploded! Covering the city in volcanic ash 16 feet deep. Then a searing combination of lava and ash as hot as 1300 degrees. The eruption of this volcano lasted for over 24 hours. More than 200 people died while it was erupting. It over 200 miles out of Pompeii. Pompeii was suddenly erased from the map. About a third of the city still lies buried today. Right now this city is one of the most famous places in Italy for tourists to look at.

